

# SOLAR WRITER

## COMPOSITE

A SOLAR WRITER REPORT  
for Harry, Duke of Sussex and Meghan, Duchess of Sussex  
**WRITTEN BY STEPHANIE JOHNSON AND BRIAN CLARK**



**COMPLIMENTS OF Rhonda Buttery**

ABN 90542529535 PO Box 701 Cleveland Qld 4163 Australia

**Mobile:** 0414 74 6633 Outside Australia +61 414 74 6633

**Email:** [rhonda@astrotech.com.au](mailto:rhonda@astrotech.com.au) **Web:** [www.astrotech.com.au](http://www.astrotech.com.au)



## Introduction



A well-known saying often ascribed to Aristotle suggests that ‘the whole is greater than the sum of its parts’. In essence, this is the nature of the Composite or Combined Chart, in that the alchemical combination of two individuals can create a relationship greater than the two. The secret is in working together to create this possibility. Hence, like the individual birth Chart, the Composite Chart holds the potential for fulfilment and each individual either takes hold of or rejects this potential. In many cases, the potential of the Composite Chart never manifests because the individuals involved are not working together to ignite the possibilities of their relationship. It’s also true that not every relationship is a positive one, much as this might be the wish. The Composite Chart can shed light on the true nature of each relationship.

Another way of describing the combined energies expressed in the astrological Composite Chart is by using the word “synergy”. Synergy is the dynamic force that is a result of working together to achieve something greater. The New Oxford Dictionary defines “synergy” as ‘the interactions or co-operation of two or more organisations, substances or other agents to produce a combined effect greater than the sum of their separate effects’. This is the underlying premise of the Combined Chart; that the astrological combination of two horoscopes can generate cosmic alignments more powerful than the individuals separately. The interpretation of a Composite Chart is a means of engaging in this mystery.

Astrologically, a Combined Chart is calculated by taking an average, midpoint or mean amount between two or more horoscopes to generate a single Chart. This single Chart is often referred to as the Composite Chart and takes two or more individuals in a relationship and produces a single Composite horoscope to represent the soul or nature of the relationship. This technique can be useful in ascertaining patterns, challenges, and timing in the relationship itself. However, it does not describe each individual’s relationship needs. For instance, a Combined Chart may describe an intense synergy of two people. What happens when only one of the two people wishes for intensity? Conflict may occur or the relationship may simply dissolve. This report is intended by the authors to describe the potential of each combined duo, the alchemy. The choice of whether to pursue the “gold” in each relationship remains an individual one.

## THE HEART OF YOUR RELATIONSHIP



*“The meeting of two personalities is like the contact of two chemical substances: if there is any reaction, both are transformed.”*  
 -- C.G. Jung.

### **The Sun**

There is only one Sun in our Solar System and it is the central focus. In every relationship, there are two, as each person brings their own Sun into the partnership. This might generate too much heat in the relationship unless a way is found to moderate and focus the intensity. This is the nature of the Composite Sun, which blends the two temperaments and shifts the centre of gravity away from an individual, placing its centre of attention on the relationship. As a couple begins to forge their commitment to the relationship, the focus shifts from ‘I’ to ‘We’, and from individuality towards connection. At the heart of every relationship is the central point which keeps the relationship alive and radiant. This is the Composite Sun.

As an image, the Composite Sun is the heart of the relationship, the planetary organ which provides the nutrients and life force to the relationship. It symbolises how the relationship remains vital, and how the couple can be more animated and lively. The Sun is also a symbol of identity and represents what is unique and especially characteristic of the relationship. It symbolises ideas and goals that are important to recognise for the wellbeing of those involved. As the heart centre of the Chart, it reveals the essence and purpose of the relationship. The encompassing question might be, ‘for what purpose has this relationship been created?’. On a more pragmatic level, it suggests factors that are important to identify as well as core issues in the relationship. The house position of the Sun will shine a light on what areas are of interest and importance to the couple; while aspects to the Sun highlight challenges to the vitality and resilience of the relationship, identifying other energies that need to be acknowledged in the relationship.

As an image of father or authority, the Composite Sun also suggests how the relationship is cultivated and promoted. Therefore, it is an important image for any couple to acknowledge as participation with this energetic quality develops the heart muscle of the relationship. However, like all Composite planets, there is often an irony in the quality of the Composite Sun which is important to reiterate. The Composite Sun is often at odds with one or both partner’s Sun signs. For instance, a Sun in Sagittarius involved with a Sun in Aquarius may have their Composite Sun in Capricorn. As individuals, their mutual recognition of freedom and wider vistas may need to find a more conservative focus in their relationship. When a couple locates

their Composite Sun, their relationship shines; therefore, the house of the Composite Sun will suggest where the couple might metaphorically find more sunshine.

### ***The Sun is in the 11th House***

Above and beyond all else, this placement of your Combined Sun points to a strong and lasting friendship. Unless there are other astrological indicators, this placement suggests that you enjoy each other's company and are happy to pursue shared activities. Your friendship may have been sparked through meeting at a social club, organization, committee or sporting association. You may also have been introduced by mutual friends. The nature of this relationship, beyond friendship, is shown by other astrological indicators. However, you can be assured that friendship is a strong basis for any type of relationship, whether personal or professional. You can communicate your hopes, dreams, and wishes, knowing that you support each other in these goals. Although not as strong an indicator of marriage as some other placements of the Combined Sun, this one does provide an excellent basis for marriage. What can be better in the long-run than knowing that your marriage partner is also your best friend? As philosopher Friedrich Nietzsche said: *It is not a lack of love, but a lack of friendship that makes unhappy marriages.* As a couple you can help each other work towards shared goals and visions, enlisting the help of friends and colleagues. You may enjoy working together on a committee or in a social setting. Your calendar is likely to be filled with friends, family, and loved ones who stimulate your friendship.

### ***The Sun is Square Uranus***

Some tension is acceptable in a relationship as it can add a little spice to life, but too much is likely to cause problems. In your case, the planet Uranus is combining with the Sun in a way that indicates that you have too much friction. Together you experience a restlessness that leaves one, or both of you, doubting your commitment. This is because your individual natures do not naturally align and you are sometimes at odds, not fully understanding each other. Of course, if you have other positive influences, then you can work through your differences and develop an understanding of your authentic natures. Respect can be a strong bond if acceptance is present.

### ***The Sun is Trine Neptune***

This combination indicates an association that is blessed with caprice. You are both drawn to an inexplicable quality in each other. Romance may be in the air, or you share a dream for the betterment of the world or yourselves. Whether you have met through business or personal ventures, and whether you are acquaintances or intimate friends, you recognise a kindred spirit when you see one. You know that destiny has played a hand, and if nothing else, that you are going to teach each other a valuable lesson. Somehow you feel that knowing each other has made this world a better place. Alone, this aspect does not indicate a strong bond, but if you have other clear relationship indicators then you are likely to enjoy this relationship, feeling that it is a deep connection that helps you rise above daily problems. Sometimes this combination highlights a shared passion for the arts, charitable works, alternative therapies or spiritual pursuits.

### ***The Sun is Square Chiron***

Whenever Chiron is highlighted in an Astrology Chart, it signifies both a source of emotional pain and the opportunity for healing. In your case, Chiron is combining with the Sun indicating that this is a profound union with subtle undercurrents. In her book "Anatomy of the Spirit: The Seven Stages of Power and Healing", author and modern-day self-help guru Carolyn Myss espouses two people forming a bond based on their emotional wounds. She explains that one person reveals an emotional and hurtful experience, and the other person empathises. Through this empathy, two people form a union. Myss calls this being "wound-mates", not soul mates. Does this ring any bells? Perhaps you have met under similar circumstances, perhaps even through a group or cause that is close to your heart because of your personal experience. Many people have hurtful memories from the past. The vital factor in your relationship is that you help heal each other's painful memories rather than add to them. Compassion is a key factor in all communications. You need to keep a strong heart connection rather than focus on the intellect. If you speak from the heart then you are likely to nurture your bond. You may also benefit from coming together for a cause, or to heal or teach other

people. These pursuits may provide just the platform for you both to gain understanding and self-expression in a safe and loving manner.

## THE SOUL OF YOUR RELATIONSHIP



*“Living together is an art. It’s a patient art, it’s a beautiful art - it’s fascinating.” -- Pope Francis*

### **The Moon**

As the indication of attachment and the barometer of emotional security, the Moon is especially important in the Composite Charts of dependants, like mother-child relationships, couples with children, and/or long-term committed partners living together or even flatmates. In your relationship, the Composite Moon’s House position suggests where you both might build the foundations for your emotional wellbeing, and where you share in the shelter of each other. Your Composite Moon signifies the emotional comfort levels in your relationship, and what is needed to help secure your relationship. It is where you find the feelings of belonging, and even the atmosphere and ambience needed in your home and private spaces, to help nurture and grow your relationship together. The Composite Moon represents the conditions that help you both to feel at home. For instance, are there many moves? a permanent address? Or could you live interstate or overseas? The Moon is instinctual; in your Natal Charts, it suggests the habits and familial themes you both bring into the relationship, but in the Composite Chart it suggests the innate patterns and rituals that are natural to your relationship. Do you fit together easily, ride the ups and downs of life together, or does the relationship falter at times of stress and difficulty? Is the relationship familiar and safe? These are reflective questions addressed by your Composite Moon.

The Moon reflects the many aspects of living in rhythm together. In a particular House, it describes what areas of life are necessary to cultivate in order that you both feel safe and secure in your relationship. By astrological Aspect, it suggests other forces that challenge and strengthen the security of the relationship. Ultimately the Moon is about emotional security and safety, and its position in the Composite Chart addresses these levels of your relationship.

### **The Moon is in the 9th House**

Having the Composite Moon in your 9th House blends together two contrasting energies. The Moon needs to be contained and safe, while the 9th House suggests a place that is wide open and foreign. But this need not be incompatible if you both are prepared to support your partnership through the exploration and adventures of life. You need to be open and full of faith knowing that security is found in your idealism and search for greater meaning, not through trying to follow someone else’s ideas of partnering. As long as you are open to new schemes and adventures, life responds and your relationship grows. Destiny is telling you that your relationship alchemy conjures up travel abroad and contact with foreign places, people, and ideas. Even though you may not have been exposed to the world beyond your culture, you both need, and come to appreciate the cross-cultural experiences that you share in your relationship, as they bring you closer

together and create a unique language between the two of you. It's paradoxical that you find home far away or you feel closest when you participate in something foreign.

Sharing philosophical beliefs, human values, and ethics are important in your relationship; therefore, the shared philosophy and the intellectual pursuits of your partnership need to be nurtured. You develop your own worldview based on the synergy between each of you. This might mean you are able to feel closer by sharing spiritual practices together, studying something that inspires you both or travelling and exploring other cultures and countries. Whether you need to go outside to do all of this or whether it comes to you is the question. However, the answer is simple; as a couple, you need to participate in the adventure of life and believe in the possibilities that exist beyond the horizon of your experiences. You need a wide-angle lens on your camera, a cross-cultural cookbook, and up to date passports. You need to know that your life together is a journey of discovery and adventure and that your future is ever present.

### *The Moon is Opposite The Midheaven*

Your Moon is highlighted as it is on an angle on your Composite Chart, suggesting the themes of care, dependency, security, and belonging are systemic to your relationship. The changing temperament and rhythms of moods, feelings, and reactions need to be anchored in the harbour of your relationship through your kindness and concern for each other. The issue of dependency is one of the founding principles of your relationship, as the Moon is at the base of your Composite Chart. It is crucial to acknowledge how much you depend on one other. On your relational pedestal is the question of how your relationship meets your own private needs and the needs of others, an important consideration every time you enter the privacy of your own home or the intimacy of being together.

Having the Moon on the IC of your relationship chart brings its own unique attachment style or way of bonding and feeling safe. For you both, it is important to house your relationship, that is locate it in a place where you can feel safe and secure with each other. Your relationship needs privacy and enough time to foster your special bond, something not always easy to provide in the busy-ness of life. As your relationship develops and becomes more stable, you will need to make choices around your home and location. Do you need to be near family or friends? schools? near work? You will notice that your home will probably reflect the changes in your relationship through life as if your home is a mirror of your own relationship. People come into your home and mention its quality of feeling, how comfortable they are or how warm it is. Your home reflects your relationship, but it also needs to provide the warmth and security to nurture your private lives. Whether in a personal or professional relationship, this placement suggests that your partnership needs to be anchored and steady; therefore, it is wise to collect as many reminders as you can, that your bond is well secured and protected. Hopefully, you would not leave your home uninsured. Likewise, it is important to protect and ensure the safety of your relational bond.

### *The Moon is Sextile Venus*

The combination of the feminine Moon and Venus suggests that values from your families and childhood experiences, including the likes and dislikes of your parents, might influence your relationship. The Moon inclines towards dependency, while Venus is more independent. Therefore, be aware that your relationship might swing between caring and loving. Perhaps domesticity might overshadow relating, or pleasure-seeking might obliterate security. You may also juggle being public and private, needing to be in the world as a couple; yet also wanting your own private space.

Sentiment and romance can become confused. Home and place are important parts of any relationship, as are family values and traditions, which are different for each partner. The relationship is challenged to merge your two different backgrounds to find your own values and security. While there is an ample reservoir of love and devotion in your relationship, the secret is how and when to express this love; when do you each need to let the other do their own thing and find their own way, versus when do you support each other unconditionally?

### *The Moon is Sextile Mars*

Active and passive principles become aligned in an uneasy combination here, which might express itself through fiery emotions or emotional conflicts in your relationship. Mars is desire, while the Moon is need; when these urges clash in your relationship, you both might go after what you don't need, or attack what nurtures your connection - a difficult combination for relating. There may be a conflict between what you desire and how secure you feel going after this. As a team, your challenge is to find the security and safety in striving for your goals, as well as to feel safe with your conflicts, allowing the relationship to be out of harm's way when anger or tension arises. When conflict is harnessed, your relationship draws on an innate supportive strength that is constellated in the face of adversity. Lunar emotions can be heated up by Mars's passionate flames, then directed towards your ambitions and goals.

Tensions might arise between the roles of son and lover, father and husband, carer and partner. If any of these roles are on a collision course in your relationship, it is best to face these as a united team to move beyond the impasse, rather than leave the difficult feelings or unexpressed emotions smouldering. The paradoxical needs for closeness and autonomy are also part of the landscape of your union, and finding ways to accept both in the course of your partnership will secure your foundations.

### *The Moon is Trine Jupiter*

In your Composite Chart, the Moon is in contact with Jupiter, the largest of the planets in our Solar System and one who has earned the astrological reputation of being lucky, blessed, and bestowing fortune. While a blessing from Jupiter sounds as if it is providential, in practice, you create your fortune by participating with the chances presented to you. When these two planets work in tandem, the symbol suggests that there are many shared social and educational opportunities to take advantage of. As a couple, you are invited to find your sense of belonging and security in the world, beyond what has been familiar and routine for you both. As Jupiter promotes travel, learning, and cross-cultural experiences, opportunities to explore these may arise for you as you forge your relationship.

A solid base for your partnership is founded on your mutual beliefs, and faith in each other and the divine. While you may not ascribe to orthodox or traditional religious dogma, it is important that you have shaped a philosophy of life together that allows you to feel free enough and secure enough to take advantage of what is offered to you. Feeling secure does not necessarily mean staying in your well-known household comfort zone, but reaching beyond into a world never experienced by either of you. The alchemy of being together creates new dimensions to explore and possibilities beyond what you would have encountered on your own. Your relationship may already have cross-cultural flavours and it would be good to explore these together. Imagine what it would be like to live overseas or somewhere beyond what is familiar. What would it be like to pursue your educational dreams with the support of your partner and your relationship? As a team, you find your place to belong through your quests and questions; therefore, it is always wise, as a couple, to reach out and reach beyond the everydayness of the lives you knew before.

### *The Moon is Square Saturn*

In traditional and modern astrology Saturn is often portrayed as grim and challenging, parental and controlling. However, in relational astrology, these complexities can be shared. The archetypal energy can find its context and character in the interchange between you both, but the key is to work together to share these responsibilities. In your Composite Chart, Saturn is in contact with the Moon, focusing on your shared domestic, routine, and day-to-day household duties. As a couple, you are challenged to find a way to organise your living conditions so they support your work and lifestyle. The organization of your personal life together needs to be jointly managed. Being mindful of dividing the chores, allocating responsibilities, and assigning roles is a good way to begin stabilizing and grounding your relationship. Even if your partnership is purely professional, or you are not living together, this aspect of your Composite Chart reveals the challenge to be structured, ordered, and accountable in the time you spend together. To be successful your relationship needs to be stabilised first. Knowing you can count on each other's support and strength to work through the difficulty is a great start.

However, this aspect is not just about home management, but building a structure for your enduring relationship by safeguarding its stability. Your insurance policy is your commitment to one another. Traditional marriage vows state, “for better, for worse, for richer, for poorer, in sickness and in health”; it is worthwhile reflecting on the pledge you can give one another to remain committed through difficult periods. This aspect offers you an anchor in your life together, a lasting sense of security and safety when you remain loyal and connected to your relationship; however, it is also essential to consistently nurture one another and your relationship, to mutually demonstrate your enduring bond. From this strong and stable base, you can build a loving home and family.

### *The Moon is Trine Uranus*

In your Composite Chart, the Moon shines its rays on Uranus, a planet outside the bounds of traditions, rituals, and habits. When your lunar need to belong is brought into aspect with this outer planet, the inclination to feel attached, safe, and bonded is challenged to find new and innovative avenues of expression. The atmosphere of your relationship, your living habits, and routines are distinctly different than conventional couples. Being atypical, your relationship is invited to find a way to integrate the unexpected and the uncertain aspects of life with your need for security and safety measures.

On one hand, your relationship is stimulating and exciting, attracting opportunities for growth and change. Yet on the other, this can be exhausting, since there may not be enough space for leisure or downtime. As a couple, you are invited to find ways to feel secure in the midst of change and to take advantage of opportunities as they arise without compromising your sense of place or safety. You need to experiment with your lifestyle to find what is best for your relationship; as a couple what eating, sleeping, and domestic patterns work best for you? The regularity of routines might work for others but they may prove impossible to you. Together you are on a journey to find home, which may be far away from where you started or it might be in the same place, but everything has changed. Your relationship affirms the old adage that the only security is change. If uncertainty is your only certainty then you are invited to create enough space for this in your life together. Allow yourselves to be surprised.

### *The Moon is Square Pluto*

Your living and relational style is distinctly different to most couples, and so you are encouraged to find a way to integrate the profound, mysterious, and intense aspects of life with your need for security and stability. You have the need for both a private, intimate connection as well as a familial and more inclusive one with other family members and friends. Your relationship is challenged to create the space for both, as without dedicating this time and space, your relational atmosphere may feel heavy and severe. It may take more awareness and consciousness to accept being public and unguarded with others. This is part of your learning curve together. As a couple, your alchemy invokes a passionate and profoundly deep connection; therefore, emotions may be charged by the intensity of your love and desire. If the relationship is not emotionally or sexually based, then the powerful combination is felt by the force you generate together, your ability to mutually concentrate on the same goal or the shared passion of your beliefs and ideals. Because of the intensity of the bond, powerful emotions may boil over. These invite you to be emotionally truthful with one another. You need to build the trust and confidence in your relationship which will help you to share and contain your intense feelings. Without honesty, the integrity and trust of your connection are weakened. As you build your attachment, you have the opportunity to feel deeply loved by one another. The strength generated by your relationship is robust enough to confront life's crises and misfortune. It is at these times you will feel the intensity and power of your connection as you face your demons as a team. As you confront these emergencies, your transformative faculties emerge to recreate your life together.

### *The Moon is Sextile Chiron*

Your relationship is important in providing a place to belong together. The place you can create together is more like a sanctuary away from the world where you often feel you do not belong. Therefore, your bond is like a healing balm, one that can provide the comfort of being in the right place and fitting in. Your relationship is also a place where healing and acceptance take place because of mutual support and your understanding of being marginal and outside the system. Your partnership is invited to find a way to

integrate these abandoned and rejected aspects of life with your need for familiarity and to become part of a larger community. If your relationship is a friendship or business partnership, then this suggests these themes have brought you together to share something special, as if you have a soulful bond where you can feel supported and accepted in spite of where you come from, what you do or who you are. But if yours is an emotional, domestic, and committed bond then your partnership's specialness is that you can create a safe haven together. In the place you build together, you protect each other from the recurrences of the past and accept each other for the genuine souls you have become because of your suffering and pain. Many couples long to create a sanctuary, healing centre or spiritual retreat together - you are already doing that in your own way.

## COMMUNING AND CONVERSING



*"I know no ways to mince it in love, but directly to say 'I love you'."*  
 -- William Shakespeare, Henry V

### *Mercury*

Mercury moves faster than any other planet in our solar system; therefore, the ancients likened it to their many-faced and fleet-footed god Mercury. Similarly, the alchemists named the element known for its quickness of movement after him. Mythic Mercury had multifarious roles as a guide, boundary-crosser, the guardian of flocks and the shepherd of dreams, the messenger god, charmer, trickster, the god of commerce, healer, and guide. You might have felt his presence when you and your partner crossed paths. Where there's a trick, a chance meeting, sleight of hand or a hint of magic, Mercury is somewhere nearby. Astrologically Mercury is associated with the process of learning, objectifying thoughts, communicating, sharing ideas, and making conversation. It rules two signs, Gemini and Virgo, which reflect the duality and dexterity of Mercury's approach to the schoolroom of life. Mercury is never static, always in motion, and it is a priority when comparing horoscopes, for, without adequate communication and interchange, a relationship can falter and ultimately fail. Composite Mercury describes the intellectual aspect of your partnership; it is the meeting of minds, and your ability to both brainstorm together and mutually discuss important issues.

For the alchemy to have effect in your relationship, both communicating and listening are important. Each of you will bring your own ways of thinking into the conversation; therefore, whether you exchange a few words or many, what is important is that you each remain connected to the dialogue. We have forged the way we learn and listen earlier in life, and if we habitually respond to a tone in the voice, body language or facial expressions from these entrenched patterns, we might miss a great discussion. The Composite Mercury shows your tête-à-tête as a couple, the natural lines of communication and conversation as a duo.

In the Composite Chart, the aspects to Mercury reveal the lines of communication natural to your relationship. Aspects are important, as the planets in aspect to Mercury influence the nature of communication and the feelings of being heard and understood. Its house position tells us about the areas of life where communication for your relationship is natural and most effective, where you learn and communicate together, and what skills you might develop and draw on to improve your communication. Basically, Mercury in the Composite Chart is your language as a couple, how you speak and converse together, the ideas that you share as one, your joint understanding or the disagreements that you need to focus on. When addressing Mercury in the Composite Chart, the astrologer is concerned with the how the ideas, communication, language, and plans of the relationship can be effectively shared and understood. Being dualistic by nature and willing to see both sides, the archetype of Mercury is skilful at relating. How

you honour Mercury energetically in your relationship is through communication, movement, humour, and the expression of ideas.

### *Mercury is in the 10th House*

Since you and your partner have been together, you might have noticed how more important a life plan has become. You've become more serious about what you would like to achieve and what you would like to accomplish. And so has your partner, at least you notice that you've talked it over a lot more. Your Composite Mercury is elevated in the 10th house, and being together has stirred up ideas about your ambitions and goals. You've become each other's life coach or perhaps more correctly, you've brought out the CEO in each other and want to direct and control the course of your lives a bit more tightly. But while you might want to Charter your course, it is wise to be aware of its mercurial nature as well. What might be the best starting point, is to talk about your commitment to one another and come to understand the level of your responsibilities before you talk about what you'd like to accomplish. How would you imagine business partners would proceed? That's important to consider, as on one level you are business partners in the schema of your lives.

Supporting each other with your own vocation and career goals is important. You share a similar direction in life and it is important to keep the lines of communication open about this, whether it's about the disappointments or the triumphs does not matter as these too will change. Keeping your promises to one another is ultimately important, so is being accountable and responsible for your half of the bargain. It is important that you work together to accomplish the tasks you both agree on, and just as important to make sure you acknowledge and appreciate each other's contributions to your work and your life. Your relationship is a learning curve and as you grow together so does your impact and success in the world. That's why it is important to recognise the changes and cycles that affect your relationship and sit down together frequently to renegotiate and update your contracts and goals.

### *Mercury is Square Jupiter*

Your challenge is to channel and guide the abundant energy released by your relationship, so it is not inflated, scattered or undirected. As Mercury and Jupiter are mutually concerned with learning and knowledge, the atmosphere of your relationship is charged by the possibilities of travel and exploration of ideas. Both archetypes seek to explore and expand their world, so as partners you can introduce each other to a wider horizon of beliefs and ways of thinking about life. Together the urge to ask questions, seek answers, discuss alternatives, and develop your understanding of life is present. However, your enthusiasm can also wane in the reality of planning and executing your adventures. You can easily be carried away by the possibilities and excitement of your ideas, but your challenge is to know what is possible and jointly work to use your abundant imagination for more realistic results.

Whether your travel is overseas or interstate, your excursions are adventures that can lead you into territory beyond your familial experiences. Be mindful of supporting each other in the development of your ideas and learning, perhaps encouraging higher forms of education. When your beliefs or philosophy of life seem at odds, your challenge at these times is to find the common ground. Rather than your differences ending in a heated argument, find the shared basis of what you are disagreeing on. As a team, you can find ways of expressing your creative differences through teaching, disseminating knowledge, writing, communicating, etc. For business partners or couples who share their working life together, this aspect suggests that your mutual skills to educate, instruct, coach, train, inform, and counsel can be aligned and focused in a creative and imaginative style.

### *Mercury is Trine Neptune*

When a non-traditional or slower-moving planet, aspects a traditional or faster-moving one, it brings an influx of novel and creative images and influences with it. In your Combined Chart, this is the case with Neptune and Mercury, which produce imaginative and inspired ways of thinking about your relationship and interaction together. As a couple, you illuminate the spiritual, artistic, and creative realms, which are situated at the heart of your companionship. Therefore, it is beneficial for your relationship to discover your creative

path together, whether that be through the joys of learning a new craft, watching your favourite videos, participating in spiritual endeavours or having your own private book club. Your relationship comes alive when you share music, art, and images together, discuss the finer things in life, or mutually marvel at the wonder of life.

Yes, together you can be highly idealistic. That's why a cautionary note about the way you communicate with each other is essential, as you may gloss over your difficulties by either not discussing the issue or by denying its impact. A helpful way to dodge the difficulty is to forget. Unfortunately, the forgetting can morph into apathy, leaving your relationship at sea. Rudyard Kipling likened words to the most powerful of drugs, an interesting turn of phrase for your relationship since it is very important for you both to be as clear and lucid as you can be about significant issues. Therefore, it is vital to recognise that confrontation and addressing contentious issues may be difficult. How can you imagine ways to be creative with your disagreements without dampening your dreams? One way is returning to the ideals, beliefs, and visions that brought you together, and start again to mutually discover why you may have wandered off course. But what always revitalises your connection is your mutual participation in the spiritual and the more profound aspects of your life.

## LOVE AND DESIRES



*"Hear my soul speak: The very instant that I saw you, did My heart fly to your service."*  
 -- William Shakespeare, The Tempest

### **Venus**

Venus is the Goddess of Love. Therefore, her placement in a Combined Chart is one of the key indicators of a love relationship, depending on where she resides. This benevolent goddess also shows us where a partnership is happiest, whether it is a love bond, business partnerships, friendship or family tie. What do you enjoy doing together? Where can you find your pleasure, alleviate the hardships of life, and find solace in each other? Ardour can be sexual and based in love, but it can also be a shared passion for cause, activity, interest or making money. If the planet Venus is well placed in a Combined Chart, then a couple can enjoy sharing mutual interests and desires. However, if there is some astrological affliction, you may have difficulty satisfying each other's desires. In other words, this is a vital planet when it comes to assessing the success or otherwise, of any relationship. You are most happy when you remember the saying by author Jean Anouilh, *'Love is, above all else, the gift of oneself.'*

### **Venus is in the 12th House**

Love knows no boundaries with this placement of the planet Venus. You are either experiencing the heights of passion and romantic love or the depths. Herein lies the difficulty – finding the right balance. One or both of you tend to idolise the other. As a result, the expectations are high. Whether or not this is a romantic union depends on other aspects of your astrology. However, you can be assured that intense feelings of love abound. The problem is that disappointment is likely because neither one of you can live up to the expectations being placed on this relationship. In fact, you can drive yourselves to the edge of reality trying to become the personification of each other's love. This is obviously not healthy. If the bond is deep and you are both committed to working through the myriad of almost inexplicable misunderstandings then you can form a deep and lasting bond. However, your relationship is like a garden that constantly needs tending. You cannot afford the weeds to grow or little else will bloom. Counselling may be beneficial at times, to help you to sort through the emotional quagmire. If you like intensity then you may thrive in a relationship that is full of drama, but you may also find relief in deciding to end the interactions. This association can indicate a couple who comes together to work in an institution, for the betterment of humanity or in a spiritual community. Here you are both free to explore deep and meaningful pursuits and enjoy a sense of purpose.

### **Venus is Conjunct Mars**

This is a powerful statement about your attraction to each other. You are like two magnets drawn together. If you are free and able to pursue a sexual relationship then all lights are "green". Otherwise, you are well

advised to stay away from each other because even with the best of intentions, you are unlikely to be able to resist the urge to fulfil your desire for each other. An exception may be if you are combining to work on an intense creative project, which provides an outlet for your need to connect on an intimate level. Nevertheless, you are both still likely to feel that sex is the ultimate expression of this relationship, an accoutrement to the creative project, so to speak. It is not so much that you experience sexual tension; it is simply that your attraction is a powerful one and you feel that sex is an inevitable expression of your togetherness. Your desire for each other is potent and natural. Others are likely to notice the attraction and also feel drawn to your company. As a couple, you are highly attractive. If you are free to explore an intimate bond, then this is a rewarding and intimate union. If you are not, then you both need to be wary of the consequences of entering into murky waters.

### ***Venus is Square Neptune***

*“Every night I hope and pray, A dream lover will come my way.”* So wrote American songwriter Bobby Darin. His words could apply to this relationship. Your eyes meet for the first time and you just know that this is a special connection. In fact, each time you meet magic seems to be in the air. As a couple, you both feel that you fulfil each other’s dreams. Romance is a key component. You are “in love” most of the time. Together you may appear to others as the ideal couple, perfectly complementing each other. If you are united then you are likely to be gentler when you are together. Peace and harmony surround you. As long as you respect each other’s individual needs, then this can be a sweet union. Herein lies the rub. Sonnets, poetry, love songs, and romantic interludes can suffice much of the time, but then duty calls. What happens when the practical realities of everyday life impinge on your relationship? Do you have realistic expectations of each other and of this union? It is important you both have a true understanding of each other’s natures, warts and all. Unconditional love is required, but only after an honest appraisal of the strengths and weaknesses of the association. Otherwise one or both of you may become disillusioned. If this occurs then the trick is to adjust your expectations. Perfection is not attainable or sustainable. Romance ebbs and flows. If it is ebbing, then given the right circumstances it can flow again. This is where you both need to use your imagination or draw on other strengths in your relationship.

### ***Venus is Trine Chiron***

Yours is a special connection. Together you can heal each other. Perhaps you share a similar spiritual outlook on the world and this provides a unique bond. Your profound understanding of each other can lead to a relationship as teacher and student, counsellor and client, or mentor and trainee. If this is a love union then you need to treat each other with the utmost care and respect. It would be easy for emotional upsets to disrupt your bond. Past relationships can be understood and healed through the love that you share. However, unresolved emotional hurts can also be inadvertently triggered. Therefore, you need to be gentle with each other when you relate. You may enjoy sharing experiences such as health and spiritual retreats, meditation or prayer meetings, or joint healing sessions. An alternative path is more beneficial for you as a couple rather than undertaking an orthodox lifestyle. Forgiveness is a powerful instrument in your relationship toolbox. This union provides you with opportunities to forgive the misdemeanours of past loves and move forward with love in your heart.

### ***Venus is Square The North Node***

This is a significant combination indicating that you are destined to meet and form a relationship. Your bond is most likely a lovers’ union in which you both feel a strong attraction. Together you experience a heightened sense of pleasure, romance, and appreciation of what is good in life. When you meet for the first time you may have an uncanny feeling that you have known each other for a long time. There is something familiar when you look at each other. It is possible that your paths have crossed before. When the timing is right you form a strong and fated connection. In some cases, this relationship can spark a latent talent or interest in the arts, beauty or fashion in one or both of you. Together you are eager to explore these pastimes. As you enjoy the riches that life has to offer, others are attracted to your glow. As a couple, you draw people to you. You are popular, pleasant company and may find yourselves on the end of many social invitations and the centre of many communal events. You seem to be in the right place at the right time.

*“Profound desire, true desire is the desire to be close to someone.”*

-- Paulo Coelho

### **Mars**

Mars's character is more individualistic, competitive, and combative, rather than other-orientated and co-operative. Mars represents the yang, masculine, outer-directed polarity, while Venus holds the yin, feminine, inner-directed pole of relating. In the Composite Chart, Mars suggests where a couple might need to focus energy, apply will, and assert desires. Astrologically Mars symbolises anger and libido, emotional and sexual expression, and coaches you to reflect on ways your relationship might express these desires more functionally. Mars's domain is a volatile, yet exciting area, and one that needs to be acknowledged and respected in your relationship.

Composite Mars symbolises the objectives, goals and ambitions of the relationship; therefore, it is wise to consider what this force invites you to aim for as a team. But, as implied, Mars' independent and dynamic force is often more about separation than attachment. To consider Mars in a relational context suggests that when you combine your energies you can act in a potent and forceful manner to strive for what you want. Therefore, in a Composite Chart, harnessing Mars empowers you both to strive for what you want to achieve together.

### **Mars is in the 12th House**

Mars symbolises your desires in your relationship. In any union, there are desires and needs. Needs are non-negotiable. Desires or “wants” can be negotiated in a healthy relationship. The stronger your sense of self, the better you are able to negotiate from a position of clarity and compromise. Mars in a Composite Chart shows where your union is likely to experience a conflict of desires. When you are in sync, then all is well. When one of you challenges the status quo, then two variant positions needs to be blended in agreement in order for your bond to strengthen. In your case, this placement of Mars indicates that you may find it difficult to reach an agreement about the direction of your relationship. It is possible that you desire different types of relationships. For instance, one of you wants a friendship and the other is more committed, aiming for marriage. Alternatively, you may both have strong beliefs that result in conflict in your relationship. These beliefs may be conscious and passionate, or they may be subconscious. The trick is to each be as clear as you can be about your own individual wishes right from the start. You need to distinguish between needs and wants, and then make sure that both communicate and compromise as much as possible. You need relationship strategies to help you both deal with any misunderstandings. If strong emotions do erupt, seemingly out of the blue, then you each need to take a step away, examine your own emotions, calm down, and then tackle the problem with compassion. It is vital, in this union, that you have a balance of give and take. One of you must not have undue influence over the other unless you are both in agreement that this is a teacher-student association. If you are seeking a love union, then you need to be united in your objectives, and to be of service to each other or a greater cause that you both agree on. This can be a powerful union if you both share a deeply-held belief in being of service to humanity, or if you both decide to live in an Ashram or join a community with a spiritual basis. The question that you both need to ask yourselves is, “Why am I in this relationship”? If the answer is positive then you are on the right path.

### **Mars is Trine Chiron**

Your impulse to act in this relationship may be tempered with the fear of injury. This combination alerts you to the potential for spontaneity and risk-taking in your relationship to be tinged with anxiety or fear. Therefore, how can your relationship support curiosity and impulsiveness in a healthy way? Perhaps, first, it is wise to recognise that as a couple you may want a lifestyle that is different than most other couples. Your anxiety may be the fear of becoming trapped in the structure of the relationships that you see around you. This combination suggests the courage to be unique in your relating style, value what others may not, and appreciate your uniqueness, even if it is marginal to the world around you.

As a team, you work together to support your own distinctive desires. You do not want to run with the herd but are more content to be on the sidelines. Mars is the warrior and this aspect reminds us of heroes who

were trained in the art of healing and warfare by Chiron. Therefore, rather than shying away from the inevitable clashes that arise in intimate relationships, healing occurs by participating and working through the conflicts. As a team, you also fight for the underdog, support the causes that are undervalued, and strive towards your spiritual integrity.

### *Mars is Square Neptune*

Mars and Neptune are not the easiest partners, yet when they work as a team there is a grace and elegance that can arise from their union. How you find the working partnership between these two energies in your relationship is your task as a couple. Perhaps themes in your relationship might be the struggle between feeling sensitive and being strong, being sympathetic but not surrendering, or being receptive but not passive. Ironically, for this archetypal pairing, strength is derived from vulnerability, understanding, and sympathy. Therefore, the key is to be open and listen carefully to one another, especially when there is a disagreement or misunderstanding. Since Neptune erodes the psychic boundaries between you both, confusion will arise between what each of you is feeling and wanting. Therefore, it is best to go slowly when working through these layers of feelings.

When desires are left unattended, the passion in the relationship becomes eroded by romantic and unrealistic images; therefore, it is necessary to keep the flame alight rather than have it extinguished by a flood of unexpressed feeling. Your relationship has an enormous creative potential, whether that is learning a language together, dancing in the dark, listening to music or repainting the house. Creative or spiritual tasks completed together are enormously satisfying and rewarding, as well as inspirational to all those who are watching!

## GROWTH AND COMMITMENT



*“My bounty is as boundless as the sea, My love as deep; the more I give to thee, The more I have, for both are infinite.”*

-- William Shakespeare, Romeo and Juliet

### *Jupiter*

Relationships are a work in progress. The union of two people can never be taken for granted. A relationship is a process, a constantly changing one. Like a garden, relationships need tending. When attended to on a daily basis, a relationship grows, and love flourishes like the plants that thrive weed and pest free in the warm rich soil. Neglected relationships slowly fade away, like the garden in which weeds gradually take over and the plants wilt and die. Other planets in this report indicate the challenges, the work needed, and the strengths that can be relied on to foster your bond. The planet Jupiter is a much-welcomed indicator of growth and natural strengths that can be relied on to naturally encourage and nurture your union. Continuing with the gardening analogy, Composite Jupiter represents the enjoyment that comes from viewing your garden's growth and bounty. This generous planet shows in which areas of your combined lives you are satisfied, rewarded, and happy together. This is your story of the easiest path to growth and expansion. The planet Jupiter is your indicator of the gateway to abundance when you are together. If Jupiter is prominently placed in your Composite Chart, then you are likely to believe in the bounty of this union. Astrologers believe that a strong placement involves the 1st, 4th, 7th and 10th Houses of your Chart. Even though Jupiter shines positive and expansive rays on one area of your combined lives, you do need to ensure that you do not take this area for granted. Appreciation and gratitude are required for the rewards that your relationship introduces into both of your lives. Keep tending the garden of your relationship and you both flourish.

### *Jupiter is in the 1st House*

This is a strong placement for the bountiful planet Jupiter, indicating that good fortune accompanies your union. Together you are joyful, able to express yourselves fully and eagerly embrace each stage of life's journey. You know that you have found a companion who is able to support you and inspire you, no matter what life throws in your path. In some cases, you may be expecting the impossible from each other, but strangely enough, your optimism seems to be well rewarded, even if it is in the ability to laugh at yourselves. Laughter is prominent in this relationship, as you feel a sense of ease and expansion. Others are also inspired by your enthusiasm. You might be surprised by the extent of other people's support of your union. "Don't they realise that we have our differences too?", you may ask yourselves. Of course, you have your differences and difficulties, but you also have an innate understanding that you will grow closer and stronger through facing rough terrain together. Somehow you do not doubt each other's fidelity. This may be because you share a strong value system, or you share an interest in something that serves humanity such as a religion, spiritual pursuit, philanthropic enterprise, cultural matter or sporting interest. Travel is likely to

feature strongly in your union. You are likely to learn much and gain great joy from local or foreign adventures. If your individual natures are more introverted, then you may enjoy arMidheavenhair travel, the type where you watch travel or nature documentaries or inspirational foreign films. Of course, you could do all of the above together. This is fortunate placement indeed. Enjoy.

*"The only limit to your impact is your imagination and commitment."*

-- Anthony Robbins

### **Saturn**

Like Jupiter, Saturn is a social planet and moves through one sign of the Zodiac approximately every 2.5 years. Couples born close to each other may have the same Saturn sign. They will, therefore, share similar experiences of trends and fads, and also the same internal moral compass regarding laws, rules, and what is socially acceptable. In a Composite Chart, Saturn indicates the structure and backbone of the relationship, the need for agreed-upon rules, regulations, and boundaries.

Composite Saturn helps to illustrate the constraints and limits placed on your relationship through social and cultural conditions. As a couple, it is helpful for you both to be aware when boundaries are important to you, what areas of your shared life feel restrictive or controlled, as well as where insecurities and pressures originate. Saturn is symbolic of the skeleton of your relationship, where structure and organization are needed to support your partnership. It suggests what traditions and rules need to be respected. It also points to where rules, a lack of maturity and authority figures may become problematic if relational responsibilities and everyday tasks are not equally shared or well-managed. However, it also illuminates the areas of your shared life where solidity, stability, and longevity can be forged. By nature, Saturn represents the outermost limits of what is still within our control and jurisdiction. While it is often experienced as limits, it is the maturing force within the relationship that helps to secure and structure the relationship in the 'real world', bringing lasting success and achievement.

In relationship astrology Saturn is the 'glue' that holds the relationship together; it is commitment. In the Composite Chart, it shows in what areas of your life this commitment is necessary to forge and shelter your relationship. However, it also symbolises where stress may occur within the relationship. Yet the nature of Saturn is also highly rewarding, as with hard work and perseverance, rewards and acknowledgement are possible. Therefore, Saturn symbolises the area of your life together where hard work, determination, resolution, and responsibility pays off.

### **Saturn is in the 1st House**

There are three ways we might think about Composite Saturn in your 1st House. Firstly, Saturn is the lawmaker, so it is wise to reflect on what rules and enforcement need to be brought to this area, which is how you present yourself as a united front; perhaps how you both attend to your relationship or how you speak about and for the other when they are not there. Secondly, Composite Saturn suggests where together you can cooperate on building the appropriate boundaries physically, emotionally, and psychologically. And thirdly, Saturn can symbolise your relational trials, perhaps even its Achilles Heel, so its House position can point us to where these might be located.

Being in the Birth Chart House of personality, Composite Saturn refers to how others interact with you and how you navigate your direction together. What is important is that you present a united front and are in agreement about your direction and social activities, being mindful about not making a decision about your relationship without the certainty that you are both of one mind about the choice. And when there are difficulties within your relationship, it is important that others are not privy to this. Your relationship needs to feel protected by the integrity of respecting each other, no matter how difficult your private struggles feel.

It may take time to feel at ease as a couple in public and both feel confident together; therefore, it is important to acknowledge your vulnerability and hesitations with each other. While it is important to have a strong boundary between your relationship and others, it is not wise to have walls between yourselves. One

way to deal with any uneasiness as a couple in public is to rehearse beforehand. If it is an important social event, perhaps help each other prepare, remember to support each other during the evening, have some dancing lessons together or mutually make the intention to be united and supportive. It is in this very private way that your relationship becomes stronger and better able to navigate the everyday social world.

### ***Saturn is Conjunct The Ascendant***

When Saturn is on an angle of your Combined Chart, it is as if an important signpost points you in a particular direction. It is like a weight, or a force like gravity, pulling you along a certain route which requires conscientiousness and working together as a reliable and dependable team. In your Composite Chart, Saturn is rising on your Ascendant, which acts as your guide and conscience when you begin projects or start new ventures. Therefore, it is always important to do your homework before you initiate any course of action. Adapting the Boy Scout motto "Be Prepared" in your relationship would be useful, as it suggested being ready, willing, and able to do what was necessary for any situation that presented itself, as well as having the character and fitness to live a valuable life. Saturn implies responsibility, not to others, but to sustaining and developing your relationship. Therefore, it is important to be looking out in the same direction so you are working towards similar goals and outcomes. Your relationship may have started slowly or with some difficulty, which is consistent with this image. It takes time and effort for you to emerge successfully as a team, but it is all in the timing, and this image asks you to respect that as well as to recognise that you are learning on the job. You both need to set your own standards and construct your relationship in your own way.

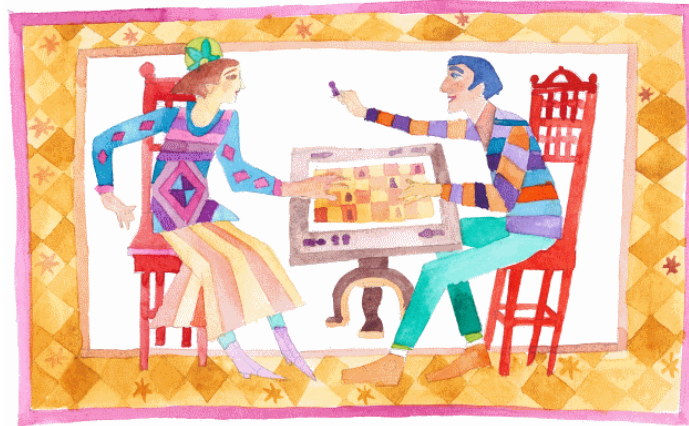
### ***Saturn is Sextile Neptune***

Your Composite Chart draws the two planets Saturn and Neptune into a mutual relationship. Astrologically, these archetypes are not well-suited; therefore, an intentional effort needs to be made to unite their natural diversity. Their differences are best described by a natural metaphor, Saturn is the mountain, Neptune the sea. Therefore, Saturn is fixed, solid, stable, and contained, whereas Neptune is fluid, changeable, uncertain, and uncontained. A dialogue is created in your relationship between these different approaches to life, and your task is to find an optimal way to work with this. You do not need to cast these life perspectives in opposition as you are capable of making the best use of each energy. The trick is how you unite their essences. For instance, when it comes to your dreams and ideals together, identify and acknowledge them fully. But realise they are not a given, nor to be taken for granted. They need to be designed and worked through. Find where you meet creatively, and then work hard to bring that into manifestation. Potentially you find your dreams and express your creativity when you focus on them together in a practical and committed fashion. Like two dancers, you can be creative, fluid and elegant together, it just takes lessons and time. The old adage, "walk the spiritual path with practical feet" applies well to your partnership.

### ***Saturn is Conjunct Pluto***

The two planets Saturn and Pluto are combined in your relationship chart. Astrologically, both planets have a reputation for being hard-hitting. By that, we mean, they confront us with the reality of life's difficulties and stressors. On the other hand, they are resilient and strong, and when acknowledged and accepted, they are life-affirming; therefore, finding a way to acknowledge these energies in your relationship is wise. They will surface when there are difficult decisions to be made, an ending or loss is imminent or when your relationship hits an air pocket or rough patch. While there may be difficulty, negativity, even despair, it is important not to interpret these feelings as bad, but recognise and accept them as part of the cycle of life and your relationship. Like feelings, they pass when they are acknowledged, discussed, and honoured. Endings are a natural part of the cycle of relationship; therefore, in difficult patches, it is important not to jump to the conclusion that the relationship has ended. Rather it is a phase or a chapter in the relationship that has ended. This becomes essential to begin the new phase as free as possible from the clutter and complexity of the last chapter. Ironically, it will be in times of crisis, transition or loss that you can find the strength and depth of your relationship. When you accept and find a way to move through the difficulties, you also establish a firmer foundation and discover soul in your togetherness.

## INFLUENCES



*“Love is begun by time, And time qualifies the spark and fire of it.”*  
-- William Shakespeare, Hamlet

### *Uranus*

Uranus spends about seven years in each Zodiac Sign. As it passes into each Sign, it brings its urge for reform and change along with it. Depending on the nature of your relationship it may be in the same Zodiacal Sign. For instance, schoolmates, siblings, first boyfriends or girlfriends probably share a similar Sign. But wherever it is, Uranus is not an energy easily integrated into a relationship, as Uranus's urge is to be separate. The more restrictive it feels, the more it reacts to find a way to restructure the status quo. Therefore, in the Composite Chart, Uranus suggest where a couple can find the space and freedom to be themselves, unbound by the pressure to conform.

Simply said, Composite Uranus shows where the unusual, extraordinary, as well as the rebellious inclinations of each couple, might be found. This area suggests where there need to be fewer rules and more spontaneity. Astrologically, Uranus has a reputation for the unexpected, often the unexplained. Therefore, it is wise to be aware of the House position and aspects to Uranus, as this may help you to be more prepared for surprise and discoveries together.

### *Uranus is in the 2nd House*

Money, despite what you might want to believe, does matter when you are in a relationship. This is true whether your association is with a relative, friend, lover or marriage partner. In your case, money is an issue from the start. This is most likely because there is an imbalance in your incomes. However, it could also be a change in circumstances, yours or your partner's, which sparks the inequity. Either way, expectations need to be discussed early. The more flexible that you can both be, then the more that you are likely to understand the ebb and flow of each other's personal finances and attitude to money. A conservative approach to income is unlikely to be constructive. You need to find innovative ways to earn your money and to discuss budgets. Financial independence may be a good solution. This is not for everyone, but you may both agree to keep your personal income separate. If equality in a relationship means a 50/50 split in finances, then you need to carefully consider this union before making a long-term commitment. What if both parties don't make the same amount of money? Should you be forced to split things evenly if it doesn't make sense to you? Depending on the answers to these types of questions you may decide to make an arrangement that is unique. As long as you are both in agreement, then you can keep your financial affairs separate. Whatever arrangements you make may still be prone to unexpected changes. Therefore, you need a strong bond that can rise above monetary challenges. A shared personal value system may be an important foundation stone, one that helps see you through the ups and downs of your financial affairs.

### *Uranus is Opposite Chiron*

Many couples who are born in the last half of the 20th Century will have this aspect repeating in their Composite Chart. Probability is, that if you have this aspect in your Composite Chart, you will also have this in your natal chart, which brings this Chiron-Uranus aspect into prominence. While this aspect is generational by nature, it does not lessen its impact as it brings its influence to bear on your relationship. As a couple living in our contemporary world, the issues that are destroying our planet and the values that are demoralizing our way of life are significant, and demand your attention. Therefore, it is important to find your common ground on political, spiritual, and ecological issues, as well as ways to respond to what you mutually see as unethical and immoral. Since this will affect your lifestyle choices, it is prudent to identify your collective concerns and develop a strategy to feel at peace with your lifestyle choices. Both Uranus and Chiron are comfortable on the fringe being unconventional, but are you as a couple? Your task together is to find out how you can make ethical and legitimate choices in a world that often turns a blind eye. Perhaps you already are a couple that is outstanding, but it is important to stand out for the right reasons. Only you know what those are.

### *Neptune*

The Planet Neptune spends 14 years in each Zodiac Sign and therefore its influence is subtle and linked to generations rather than individuals. Nevertheless, Neptune is seen by astrologers to be connected to the other world, the unseen world or the one often referred to as the other side of the veil. As such, it rules what is invisible, unseen, missing, vague, and inarticulate. Only through images and feelings can the true nature of Neptune be expressed.

For a couple in a committed relationship, Neptune is where both ideals and disappointments gather. Therefore, it is good to address the ideals, dreams, and fantasies that are part of the relationship, as well as name any disappointments without blame and judgement. In honouring Neptune, the couple can become more aware of any delusions that may erode the foundation of their relationship, as well as the dangers of misreading responses or overprotecting insecurities. Neptune in your Composite Chart is where there is sensitivity, and sometimes helplessness, but this vulnerability is shared, so it is not weak but ironically robust and potentially healing. The planetary position may also point to where misunderstandings and taking things for granted may occur. In this place, it is always wise to have reality checks about what has been said and what has been agreed upon.

However, Composite Neptune is also where you can explore your shared creativity and spirituality.

### *Neptune is in the 2nd House*

Neptune by House is where the imagination that inspires your relationship is located. Here are the dreams that can be dreamt and possibilities that can be probabilities. It is also where shared meaning and understanding can be developed, which strengthens and reaffirms the love and compassion of each partner. This placement of the Planet Neptune does not augur well for any association connected to finances. Neptune dissolves. In your case money and possessions are affected. One or both of you stands to lose financially in this union. It is possible that one of you comes into the partnership with debts, no money or possessions, or less than the other. If this is the case, then it is likely to continue. The partner with more monetary sense needs to accept that the partnership is likely to remain imbalanced. Martyrdom is not necessary, but a real appraisal and acceptance of the situation is. Even if you are equal in the monetary stakes, the nefarious Neptune is likely to cast a web of confusion over your fiscal affairs. It is possible that you share a value system that negates monetary security. If this is the case, then it is possible to share a lifestyle that is not reliant on steady incomes. For instance, you may live as artists or actors with an unsteady stream of revenue, or you could choose to live as missionaries with stipends. In fact, you would be well advised to aim for common ground when it comes to your personal proceeds. Material ambitions need to be set aside in favour of charitable, artistic or spiritual ones.

### *Neptune is Sextile Pluto*

This combination is not a major influence, but it is an indicator of the importance for the two of you to act with integrity when together. Any form of dishonesty, no matter how seemingly innocent, is likely to undermine the strength of your relationship. You each need to act with the utmost integrity, share your innermost world, and trust each other. If this is not possible, then you may be well advised to walk away from an intimate bond. Both of you need to feel safe when in each other's arms and lives. If you do, then much can be accomplished, particularly in areas where others may fear to tread. Knowing that you have each other's backs, you are able to walk a true path that empowers both of you, and those who cross your path.

### *Pluto*

As the underworld God, Pluto is focused on what lies underneath the surface in the unseen world of your relationship. Therefore, in the Composite Chart, it addresses the issues that may be buried, yet potentially eruptive. It depicts the patterns that are hidden, yet still influence you both, even pressures from the past that haunt the current relationship. On one hand, it suggests where the relationship may be drawn into difficulty, yet on the other hand, the character of Pluto also represents the transforming and life-altering experiences that are available to your relationship. There is a soulful side to Pluto, as it anchors your relationship in a deeper and more authentic place.

Pluto helps illustrate how the power of your relationship might be best expressed. You can be either empowered or dis-empowered, depending on how your relationship is able to handle the voltage and power of the energy. The House position of Composite Pluto might address areas of your relationship where loss and emotional confrontations may be experienced. It also locates the area where your relationship can be rebuilt and reborn through trust and intimacy. Pluto addresses the human experience of loss in a relationship, the deepest human emotions, issues of betrayal, and emotional control which engage the two souls involved in their relationship in a more intimate and trusting union. Alchemical texts depict the process of submerging two individuals in the cauldron of their relationship. When immersed together, alterations and revelations occur. In the context of your relationship, each of you will begin to become more vulnerable to one another in this area of your life. As well, greater patterns from both your families of origin may begin to emerge out of the shadows to be healed. This area of your life together will be profound in its capacity to heal past hurts, encourage authenticity and honesty to bring each of you closer together on a soul level.

Pluto moves slowly through the Zodiac, spending the least time in Libra and Scorpio, and the longest time in Aries and Taurus. Individuals born within the same generation will generally have the same Pluto Sign unless born near the cusp when Pluto was changing signs. With the same Pluto Signs, the Composite Pluto will be repeated in that sign. With a considerable age gap, two individuals may have differing Pluto signs. What is unique to your relationship, is Pluto's House position and its association with other Planets.

### *Pluto is in the 1st House*

In mythology, the God Pluto lived underground and rarely came to the Earth's surface. When he did, he wore a helmet of invisibility so he remained unseen. Astrologically we generally describe the 1st House as what is surfacing, apparent, and visible. Therefore, as a couple, with Pluto located in your 1st House, you may feel ambivalent about how you present yourselves to the outside world or even conflicted about what to reveal or disclose about your relationship. The planet of privacy is in the sphere of personality and the two are mismatched. Therefore, as a couple, you may feel unmet, unknown, and even unwelcome. But this is how it feels, not what is happening. It is important to recognise, that as a couple you make an impression, as you emanate power, even intrigue. While you might be completely unaware of this, what others sense is something mysterious and magnetic. Therefore, they may feel unsure and hesitant when meeting you together as a team. As a couple, you are sensitive to this and feel judged, whereas it is generally just what it is – a reaction. Therefore, first impressions are difficult, and it is worth noting this and recognising that once you start to engage with others as a couple, people respond.

Well, most people respond. Those who are uncomfortable with themselves, masquerading or inauthentic, stay away in fear of you exposing them. So, take note and reflect on the power that you emanate as a couple. But also note how social functions, cocktail parties, and superficial chatter are difficult for you both

to feel comfortable in. However, when you start to engage below the surface, then you find your territory. Therefore, as a couple, it is important to adapt and recognise this. Ironically, as individuals, you might have been quite outgoing; now as a couple, you prefer the warmth and depth of each other's company, rather than the shallow and superficial lights of others. As a team, you can make things happen, and when you consciously intend to make something happen, you can summon a tremendous currency of energy to direct towards the causes you desire.

### *Pluto is Conjunct The Ascendant*

In your Composite Chart, the dwarf planet Pluto is near your Eastern horizon. Astrologically, this is the site where planets rise out of the darkness into the light of day to be seen. In a mythological context, Pluto did not like coming to the surface, preferring to be settled underground. As an image for your relationship, this might suggest that, as a couple, you prefer being unseen or behind the scenes. However, destiny has symbolically situated the god of the underworld on the portal that opens onto the day or visible world. Ironically, while you may prefer to be invisible, it is actually the opposite. You may not sense this but people do take notice of you both, as together you emanate an intriguing quality, often magnetic, sometimes disarming or even daunting. It is hard to be unseen when the atmosphere around you is captivating.

You are deeply aware of transition and what needs be relinquished to move forward together. You have power, or at least power can be accessed together. It is in your hands. This is energy that vitalises your relationship, brings it alive and can be directed towards your personal goals. Together you muster a great force, one that has the muscle to face the toughest challenges. When you combine your vitality and energy together, the mixture animates a dynamism that is resilient and durable. Together you are a formidable team that not only faces any crisis but can work through it and be transformed in the process. Since this potent energy is out front, it is best to direct it where you want it to go, so you are not burnt out by its intensity. Accept that together you are intense and determined, sometimes obsessed, so make sure your relationship drives itself in the direction you want it to go.

## DESTINY AND OPPORTUNITIES



*"A heart to love, and in that heart, Courage, to make love known."*  
-- William Shakespeare, Macbeth

### **Chiron**

Chiron revolves between Saturn and Uranus in our Solar System. In your relationship system, you might also imagine it as a bridge between these two energies; one force wants to feel part of the system, while the other wants to be outside it. Composite Chiron may be a key to helping you understand where your relationship is not part of the normal scheme of things or whereas a couple you feel marginal, possibly excluded. It is the interplay between belonging and disassociating.

Since its discovery in 1977, astrologers have identified Chiron with wounding and healing. The wound is often the feeling of not belonging, while the healing is the acceptance of being an outsider or not feeling significant to the tribe. Therefore, in your Composite Chart, Chiron identifies where these feelings are located. Perhaps you, as a couple, feel excluded from your families of origin, neighbourhood or even society, but through your mutual acceptance, you begin to find a place to belong through your relationship. Chiron then becomes the healing balm that allows you to feel at home, belonging to each other through your commitment.

When the energy of Chiron is adopted by a couple, they will find themselves forging alliances with many different and varied individuals, other couples, and groups. As an energy in the relationship Composite, Chiron points to the wound that is apparent because of the relationship but also reveals the path for healing. It also locates where the relationship can find its own space, exclusive of the world and its demands. Therefore, it often represents the spiritual hub that unites the couple, a private place of intimacy or a meditative or remedial retreat that brings a sense of restoration and healing. In a way, Composite Chiron is the mentor and therapist embedded in the relationship.

### **Chiron is in the 8th House**

Relationships are delicately balanced at the best of times. A loving relationship offers the opportunity for healing of emotional wounds from the past, and personal growth and fulfilment. When two people relate in a tender way, then it is possible to provide the greatest opportunities for healing, rather than more hurtful experiences. Working through emotionally difficult times is when Chiron is working at its best. At times in the relationship, one person may inadvertently trigger the other's hurt feelings. These feelings may be left over from your childhood or from a previous relationship. Either way, your current relationship is an opportunity to relate differently. A loving union provides the chance to let go of the past, and experience intimacy and true love now. This placement of Chiron in your Combined Chart means that this relationship is likely to be deep and meaningful. Shared resources, sexual intimacy, and metaphysical matters are highlighted. Together

you can help each other recognise what is truly valued in your lives. Whether your lessons are painful or happy, you learn much about money, sex, and sharing. It is possible that this union will result in a business or work that has an esoteric bent. It is also important when Chiron is placed here, that you both carefully negotiate as much as you can, your values when it comes to sharing. For instance, do you agree on the type of investments that you want? Do you both want to invest in property or would one of you prefer to rent and have a large savings account? Another sensitive area is sexuality. The energy of Chiron can be very healing, but it can also be hurtful. You need to ascertain early in your relationship whether or not you are sexually compatible. If you have conflicting values in this intimate area, then you need to be very sensitive to each other's needs. The more that you address any relationship problems early in the relationship, the more that you avoid conflict later on. It is important that you both speak your truth, not what you think is expected. The emotional truth will surface sooner or later when Chiron is placed here.

*"Love is our true destiny. We do not find the meaning of life by ourselves alone - we find it with another."*  
-- Thomas Merton

### **The Lunar Nodes**

The Nodes are not planets, but points in space where the orbits of the Earth around the Sun and the Moon around the Earth intersect. But, unlike the planets, their direction through the Zodiac is Retrograde (or backwards moving). Therefore, their nature is not bound by time or space in the same way the planets are. Nor are they material or visible in the sky like planets. The word 'karmic' is used in the context of the Nodal Axis to summarise the feelings of familiarity or foreignness, the attraction or repulsion, and the overwhelming sense that the relationship was meant to be. As an abstract construct in the heavens, we can consider them to be metaphysical by nature. Whereas planets are the symbols of human instinct, the Lunar Nodes symbolise the spiritual dimension of personal experience. Hence, the Lunar Nodes are often likened to the journey across time and space or through different lifetimes.

In your Combined Chart, the Nodes assist us to reflect on the purpose and spiritual dimensions of your relationship. The Nodal Axis will fall across a House polarity of your Composite with its northern pole in the House opposite its southern pole, highlighting the environment where destiny plays her role. Since the North and South Node are part of the same system, not separate, the movement between both Nodes in your Combined Chart is like a continuing dance through time. The North Node presents the qualities that need to be intentionally supported and developed in your partnership, while the South Node is a point of familiarity, the felt experience and innate recognition of each other, where you feel connected and secure in the larger picture of your relationship. Imagine this House polarity as a crossroads where you jointly encounter the more mystical dimensions of your relationship.

### ***The North Node is in the 9th House***

The 3rd to 9th House polarity, where your Nodal Axis is placed, includes the two territories where ideas, information, communication, education, travel, and the quest for understanding are principal motifs. Therefore, your destiny as a couple intersects with these themes in your relationship journey. Together you may begin to feel more mobile, curious, and inquisitive than you did on your own. As a team, you encourage each other to become more aware of the world you live in, more involved with your passions, and more fired up about the bigger picture. A karmic theme of your relationship is that together you reach farther afield than you could have ever imagined on your own.

With so many ideas and things to learn, your relationship is the vehicle that takes you on this journey into foreign territory. While you may begin in your local neighbourhood, your relationship becomes a cross-cultural journey that exposes you both to what lies beyond the horizon of your familial experience. It is as if your relationship gives your souls flight. Perhaps you travel and pursue adventure in ways you might not have thought possible, or study different religions and cultures together. However this happens, what is important to your relationship is that it is based on a sound philosophy, civilised human values, and ethical ideals. Together you are able to search for meaning and the pursuit of higher values; however, to do this, you need to develop a vision and not get trapped by the details of the smaller picture or what everyone else

may feel is important. This is where communication and conversation are essential allies, to help you remember what is of the essence to the soul of your relationship.

### *The North Node is Square Venus*

Composite Venus is at, what is called, the bending, of your Combined Nodal Axis, which suggests that she asserts her needs more obviously in your relationship. Venus strives for connection, acceptance, and value and these are her demands of you; that you overtly acknowledge and show consideration for your relationship, that you admire and appreciate each other, and that together you take the challenge to build a precious, perhaps priceless life with one another. You often don't get more than one chance.

It is an attractive challenge that Venus offers you. In working together as a team, the possibility of being resourceful and satisfied is increased significantly. Perhaps you felt your relationship was destined for another direction, but you are both challenged to make a declaration of your love and commitment. With that, comes many possibilities. But perhaps the greatest challenge is in keeping your connection alive and loving through time. To do that requires a mutual intention, and a willingness to change and grow with the times, to discover love through all its changing seasons, not just spring.

### *The North Node is Square Mars*

Composite Mars is at right angles to both the North and South Node. It may appear that Mars is at odds with the Nodes; however, it is changing direction from focusing on one to now focusing on the other. The challenge for you as a couple is to reconsider how you actualise the potential of your relationship. You might consider how, as a team, you have gone after what you wanted or expressed your desires, passions, and anger. What are the patterns in the past around your how you pursued your goals or worked together as a team? With Mars here, it may be wise to recognise that these need updating in your relationship. Your challenge is to revitalise and redevelop how you go about working together and creating a successful relationship.

Mars is not always comfortable in a team or a relationship, as it prefers independent action; therefore, it is wise to consider when you each need to act independently, and when you need to act as a team. The competitive aspects of your relationship need to be acknowledged, and these can become healthier by becoming conscious when your reactions are serving or harming the relationship. How your competitive instincts could be constructively integrated into your relationship is a key to energizing your relationship. One of the karmic imprints is to recognise that your relationship is always changing and that each of you needs to change with it. It is always of benefit to your relationship when you can work as a team together on making the changes necessary to move forward on your life journey together.

### *The North Node is Opposite Neptune*

In your Combined Chart, two distinctly sensitive signatures combine. Neptune, the subtle, receptive, yet susceptible energy lies on your Composite South Node, a point often associated with karma and unfinished patterns from the past. When the planet Neptune combines with your Nodal Axis, you feel vulnerable. Therefore, as a couple, you may be extremely impressionable to others' response to your relationship or any family opinions or mutual friends' reactions. Together you may be upset by these feelings, but these are feelings not truths, nor predictions or judgements. With this placement, you learn to let these feelings pass through without being attached to them or giving them power.

Once you find ways to protect your sensitivity, you will understand that together you are participating in a strongly intuitive and psychic energy field. Hence you are able to 'read' each other and pick up on your partner's feelings. Your bond is deep and timeless in a way, but it is important that you find ways to be objective about what you are experiencing and sensing. At the heart of your relationship, is a deep sense of spirituality which seeks its expression through your relationship. Mutually it provides comfort and sustenance in a world that is often soulless and distant. Together you want to live in a world that is soulful and creative.

## CONCLUSION

The text in this report has been written by astrologers Stephanie Johnson and Brian Clark.

Stephanie Johnson is a professional astrologer with a passion for seeing clients, writing astrological text and creating quality astrology software. She was a journalist in Australia, England and the USA before becoming a professional astrologer. She is currently a director of Cosmic Apps Pty Ltd, and one of the creators of Solar Fire and Astro Gold. Stephanie is based on the Mornington Peninsula in Victoria, Australia. She is the driving force in the creation of the Solar suite of software and runs her own international consultation business and astrology report writing service. You can find more information at [www.seeingwithstars.net](http://www.seeingwithstars.net)

**Brian Clark** has been a consulting astrologer and educator for most of his adult life. He also is the creator of the **Astro\*Synthesis** distance learning program which has been shaped from his experience as an astrological educator over the past 35 years ([www.astrosynthesis.com.au](http://www.astrosynthesis.com.au)). Brian has his BA (Hons) and MA in Classics and Archaeology from the University of Melbourne and has been honoured with lifetime memberships from the state, national and professional astrological organizations in Australia. His books and articles have been translated into numerous languages. In 2016 his two new books **The Family Legacy: Astrological Imprints on Life, Love and Relationship** and **Vocation: The Astrology of Career, Creativity and Calling** received excellent reviews. In 2018 his new book **From the Moment We Met: The Astrology of Adult Relationships** will be released. He is the author of **Solar Writer - Vocation** and **Solar Writer - Kindred Spirits** reports. Previously he and Stephanie Johnson have collaborated on **Solar Writer – Goddess** and **Solar Writer –Money** .

**About the Artist:** The illustrations have been created by artist, illustrator and teacher, Janet Bridgland. Janet divides her time between her home and garden in Bridgewater, overlooking the Heysen Trail, and working in the second-hand bookshop Back Pages Books, in cosmopolitan Adelaide where she sells books, paints and teaches watercolour painting and drawing. Her beautiful illustrative work can be discovered at: [www.janetbridgland.com.au](http://www.janetbridgland.com.au)

This report is meant more of an introduction to the wonders of astrology rather than a complete course in its intricacies. Further studies, or a consultation with a professional astrologer, are also encouraged to explore this most ancient scientific and philosophic tool.

The information in this report is general in nature and cannot be relied upon as legal or financial advice. You should seek independent legal or financial advice. Cosmic Apps and its authors disclaim any liability (including for negligence) to any person in respect of the consequences of anything done, or not done, by anyone relying in whole or part upon the information in this report.

*If you would like further information please contact Cosmic Apps Pty Ltd, PO Box 159, Seaford Vic 3198 Australia. Phone 0488 111 078 Email: [admin@astrogold.io](mailto:admin@astrogold.io)*